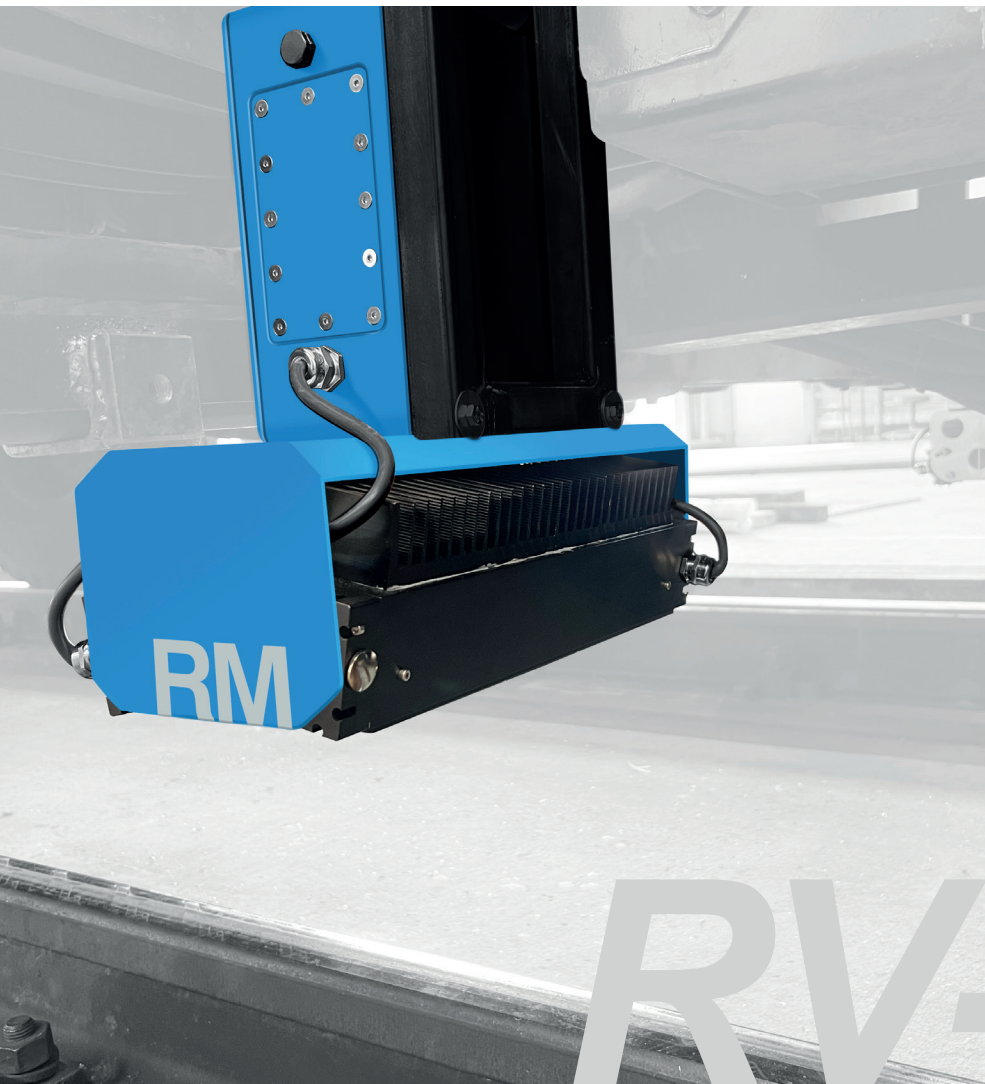


RAIL MEASURING TECHNOLOGY  
WHEN ACCURATE MEASUREMENTS MATTER



**RV-HR**

***RV-HR (Rail Vision High Resolution)***  
***High resolution vision system suitable for***  
***optical inspection of rails to assess surface***  
***quality and surface defects (RCF) and damage***  
***Suitable for mounting on trains, road-rail***  
***vehicles and trolleys***

**Product description:**

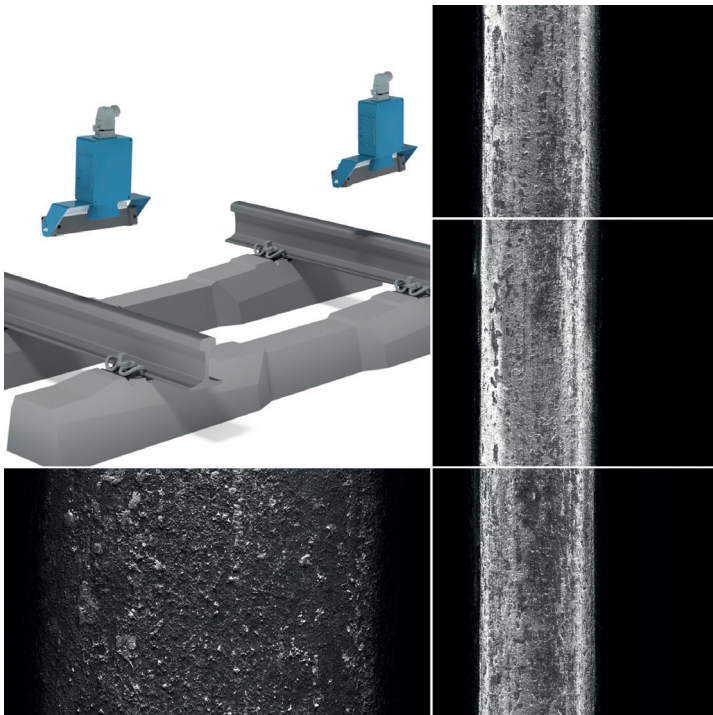
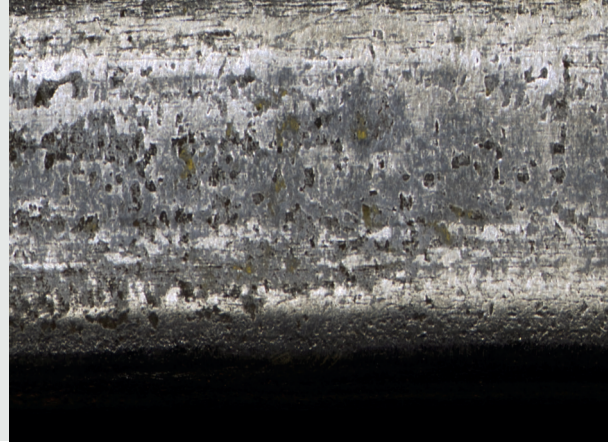
The RV-HR is a rail vision system designed to achieve a continuous inspection of rails in tracks and switches with high resolution. The system is based on linear cameras allowing for reliable and repeatable image acquisition. Once images are acquired the data can be reviewed manually with the option to use artificial intelligence for automatic recognition of rails (or track if required).

**Applications:**

- Monitoring of rail condition
- Detection of rail surface damage
- Detection of RCF
- Detection of abnormal rail surface

**Main characteristics:**

- Non contact vision system
- Continuous image acquisition (no stitching)
- On selected speed range image acquisition is speed independent
- Environment lighting independent
- Focused on rail head (optional for use with focus on other track components)
- Compact design and easy to install
- User friendly acquisition software
- Artificial Intelligence computing optional



<b>TECHNICAL DATA RDD Trolley</b>	
Image resolution	Up to 0.05mm/pixel
Image type	Greyscale or Color images
Lighting	White high energy LEDs
Measuring speed	Up to 100 kph
Data saving requirements	<40 Mb per meter
Environment	-20 to +40 deg C 0-90% humidity not condensing
Power requirements	220VAC 50/60Hz max 1kW
Input requirements	Encoder with 10 pulses per mm